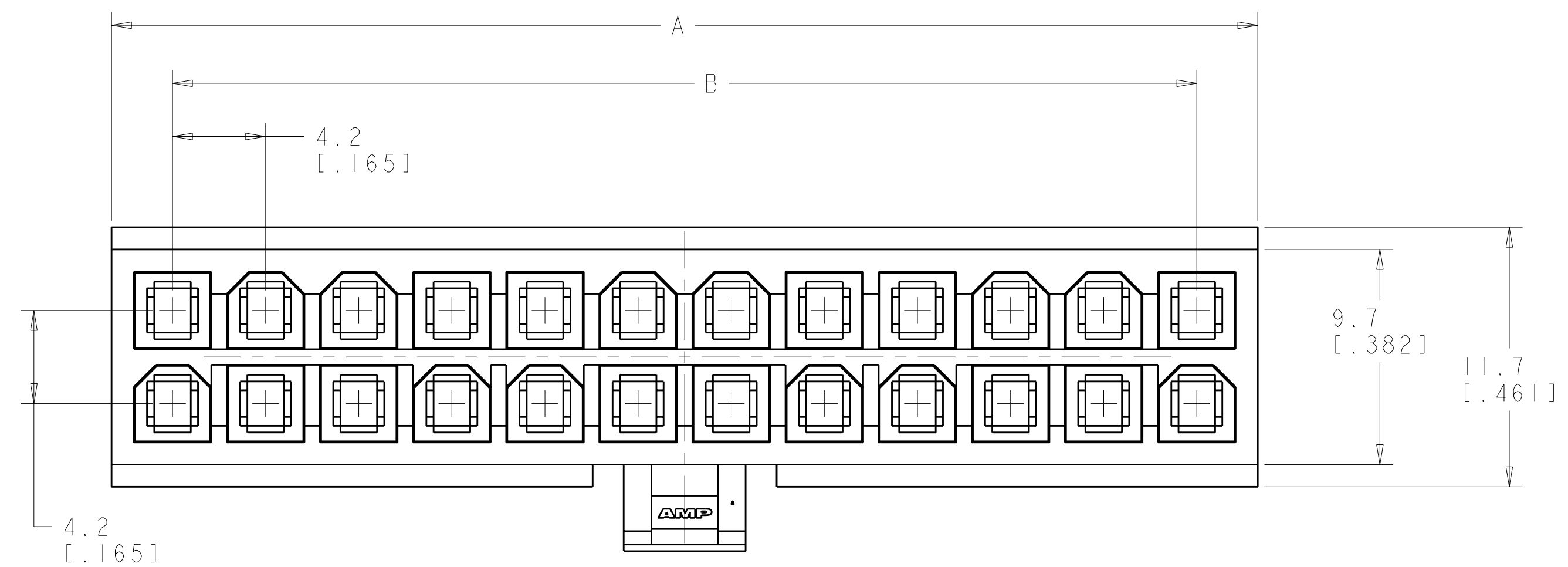
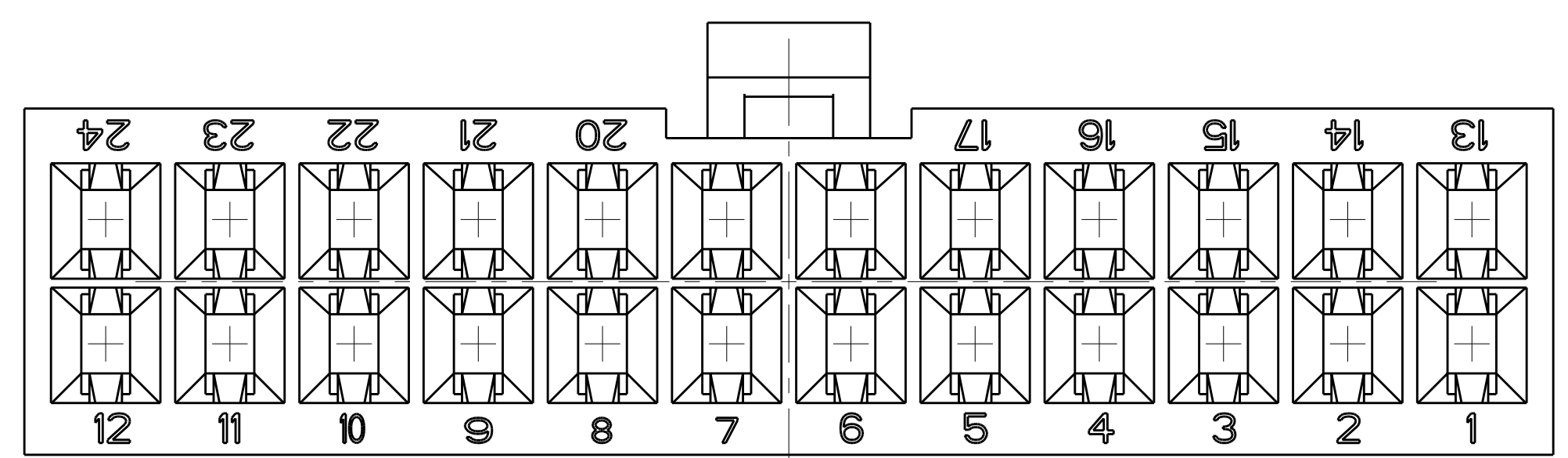
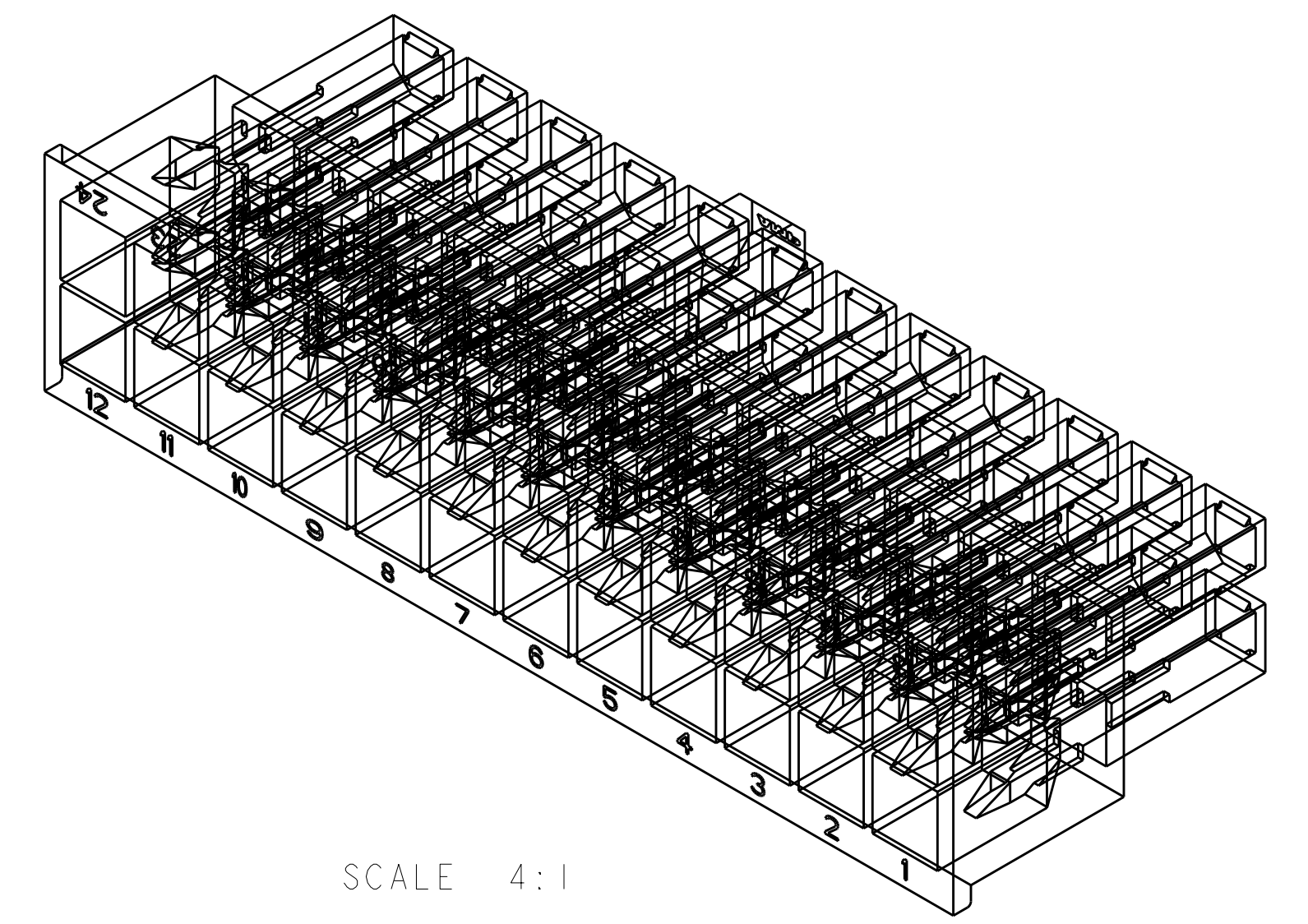
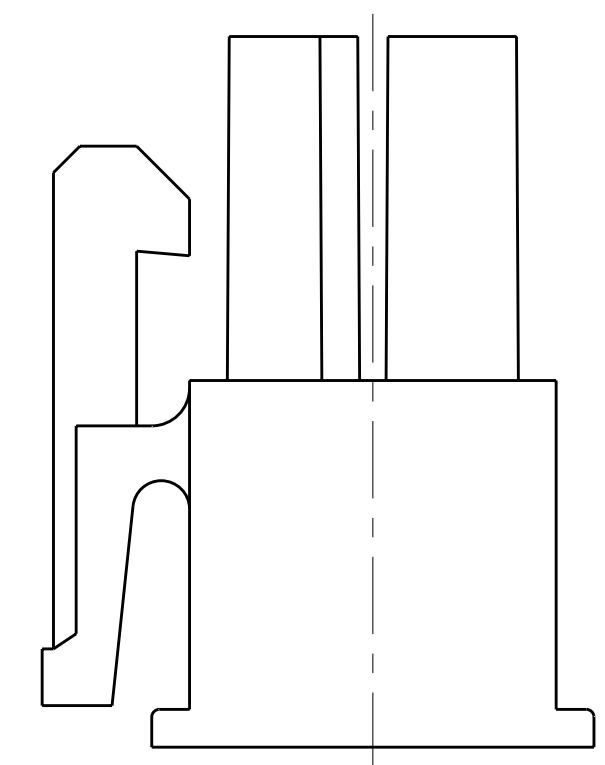
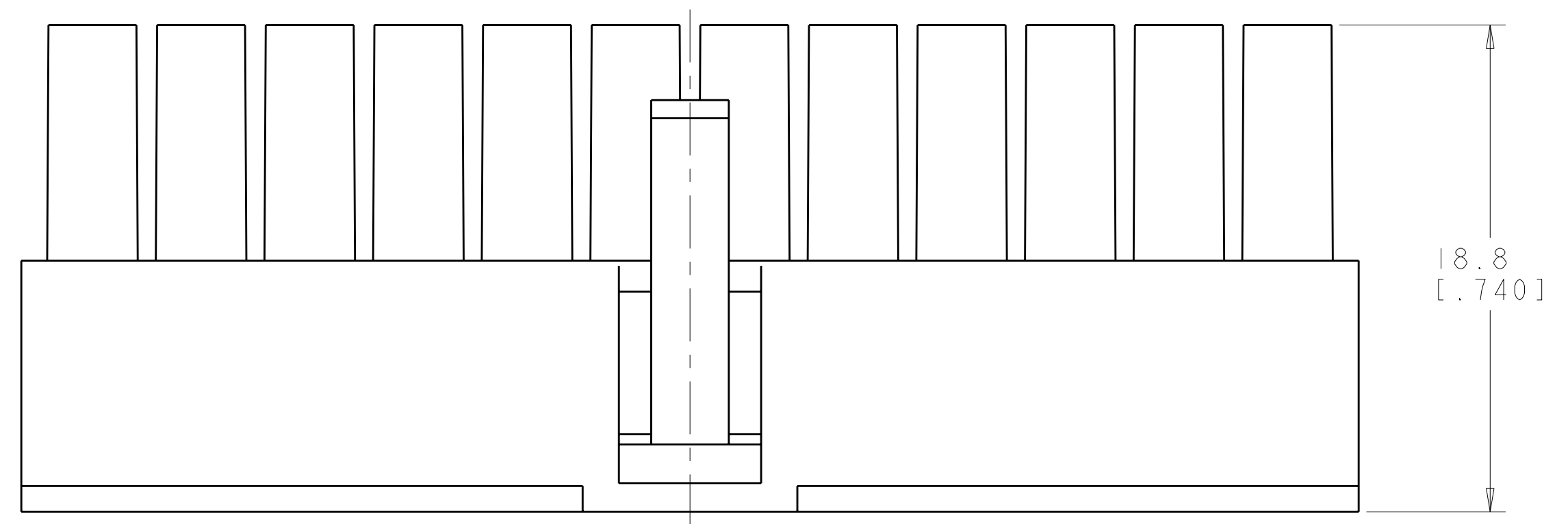


LOC	DIST	REVISIONS			
CM	00	REV	DATE	BY	APPD
		C1	REVIS PER ECO-11-005027	15MAR2011	RK HMR



- △ NYLON, UL94V-0, NATURAL.
- 2. DIMENSIONS IN BRACKETS ARE IN INCHES.
- 3. FEMALE CONTACTS MUST BE INSERTED SO THAT THE TOP OF THE WIRE AND INSULATION CRIMPS ARE FACING THE CIRCUIT NUMBER OF THE POSITION INTO WHICH IT IS BEING INSERTED OR 180° FROM THE CIRCUIT NUMBER FOR THAT POSITION.



4032.2	24	46.2[1.82]	51.7[2.04]	2-794657-4
3717.6	22	42[1.65]	47.5[1.87]	2-794657-2
3403	20	37.8[1.49]	43.3[1.71]	2-794657-0
3088.5	18	33.6[1.32]	39.1[1.54]	1-794657-8
2774	16	29.4[1.16]	34.9[1.37]	1-794657-6
2459.5	14	25.2[0.99]	30.7[1.21]	1-794657-4
2144.9	12	21[0.83]	26.5[1.04]	1-794657-2
1830.4	10	16.8[0.66]	22.3[0.88]	1-794657-0
1515.9	8	12.6[0.5]	18.1[0.71]	794657-8
1201.3	6	8.4[0.33]	13.9[0.55]	794657-6
886.8	4	4.2[0.17]	9.7[0.38]	794657-4
575.1	2	0[0]	5.5[0.22]	794657-2
VOLUME mm ³	NO OF POSITIONS	B	A±0.2[.01]	PART NUMBER

DIMENSIONS:		TOLERANCES UNLESS OTHERWISE SPECIFIED:		MATERIAL:		FINISH:		APPROVALS:		CUSTOMER DRAWING	
mm	[INCHES]	9 PLC	±0.2[.01]	DRN	R. WHITAKER	27JUN2007		TE Connectivity		RECEPTACLE HOUSING, 2 TO 24 POSITION, AMP-DUAC(TM) POWER CONNECTOR	
		5 PLC	±0.2[.01]	CHK	C. CASH	27JUN2007		PRODUCT SPEC		SIZE CAGE CODE DRAWING NO. RESTRICTED TO	
		3 PLC	±0.13[.005]	APVD	C. CASH	27JUN2007		APPLICATION SPEC		A100779C=794657	
		4 PLC	±					WEIGHT		SCALE 4:1 SHEET 1 OF 1 REV C1	
		ANGLES	±					CUSTOMER DRAWING		SCALE 4:1 SHEET 1 OF 1 REV C1	

